



**AUSTRALIAN  
WEIGHING  
EQUIPMENT**

*Weigh ahead in Weighing*

## PRODUCT GUIDE

# PLATYPUS BENCH SCALE

- High accuracy
- Water-resistant — ideal for wet and humid conditions
- Portable design





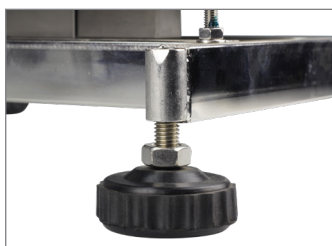
## Platypus Bench Scale

### ■ ABOUT THE “PLATYPUS BENCH SCALE”

The Platypus Water Resistant Bench Scale is a highly accurate and easy-to-use scale suited for applications where frequent washdowns are required. Its water resistance makes it ideal for tasks such as weighing seafood, raw meat, poultry, food processing, or other workplaces where hygiene must be maintained to avoid contamination.

The scale features a high-precision, hermetically sealed load cell and a stainless steel enclosed indicator, both of which are IP65 rated. This rating means they can withstand frequent washdowns without incurring water damage. The scale's large, flat, removable weighing pan allows for easy wipe downs, and its stainless steel frame is designed to tolerate wet and harsh environments.

The scale is designed with portability in mind, as it is compact and light enough to be easily transported or placed in a new location, and can be operated via battery for up to 40 hours continuously, adding to its convenience and versatility.



Adjustable feet ↗  
to help level the scale.



High quality, IP65 ↗  
hermetically sealed load cell.



Mercury level bubble at ↗  
base of pole assists with levelling  
the scale via adjustable feet.



Stainless steel frame ↗  
with rubber mounts to  
help cushion shocks.



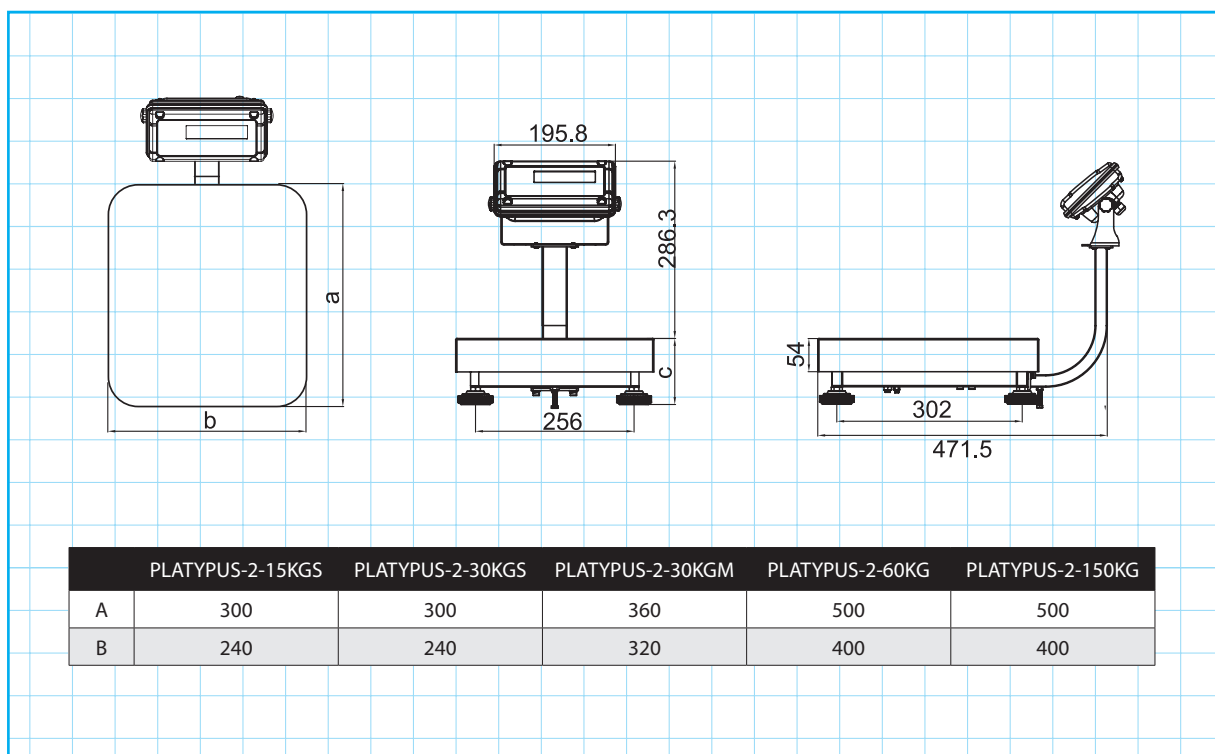
**Hygienic,  
Precise,  
and Reliable  
for Food  
Processing  
Applications**

### ■ FEATURES & BENEFITS

- Available in weighing capacities of 15kg, 30kg, 60kg & 150kg
- Weight indicator sealed in a stainless steel shell, ideal water resistant bench scale for wet & humid conditions
- IP65 stainless steel scale housing & hermetically sealed load cells are designed to withstand frequent washdowns
- User-friendly indicator mounted on an adjustable bracket allowing for tilting of the display
- Tare function
- Weighing Unit conversions (lb-kg, oz-g)
- Auto power-off function to prolong battery life
- Rechargeable battery provides up to 40 hours of continuous use (without backlight)
- RS-232 can connect to a mini-printer, label printer or computer (optional)
- Power Supply: Mains – AC adapter (12V/500mA), Rechargeable battery – NI-MH (1.2V/2000Ah x 6)



## ■ DIMENSIONS



## ■ SPECIFICATIONS

Order code	PLATYPUS-2-15KGS	PLATYPUS-2-30KGS	PLATYPUS-2-30KGM	PLATYPUS-2-60KG	PLATYPUS-2-150KG
Capacity	15kg	30kg	30kg	60kg	150kg
Resolution	1g	2g	2g	20g	50g
Type	Bench scale				
Pan size	300 x 240mm	300 x 240mm	360 x 320mm	500 x 400mm	500 x 400mm
Load cell	Single point load cell				
Display	22mm digit LCD display with white LED backlight				
Keyboard	6 keys (Mechanical switch)				
Housing	Stainless steel				
IP rating	IP65				
Power	AC adapter (12V/500mA), NI-MH (1.2V/2000Ah x 6)				
ADC update	≤1/10 second				
Operating temp	-10°C~+40°C				



## Platypus Bench Scale

### ■ AWE - THE BEST IN THE BUSINESS

AWE has built a reputation in providing world class products and services to customers from a wide range of industries for many unique applications. All the products come with AWE Quality Guarantee- giving you the assurance that they have been tested to meet or exceed the specifications and requirements of your application.

At AWE, it's more than just delivering perfectly-designed equipment, it also requires a team of dedicated people who will back you up with great service and support. Any servicing, installation and technical support issues you encounter can be addressed either onsite or remotely by our engineers and tradesmen who are qualified as:

- Licensed Tradesmen
- Mechanical Engineers
- Electrical Engineers
- Structural Engineers
- Draftsmen
- Fitter & Turners
- Boilermakers
- Fully Qualified Scale Makers
- Electronic Technicians
- Instrument Fitters
- Electricians
- Service Technicians
- Project Managers
- Formworkers
- Concreters



Call AWE today. We will find the right solution for your individual needs.

If you have questions about

- **weighing equipment**
- **packaging equipment**
- **bulk materials handling**
- **componentry**

call the sales team at *AWE Group* to find the right solution for your individual needs.

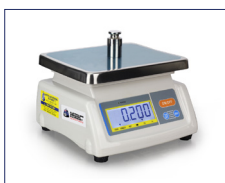
### ■ AWE PRODUCT RANGE



Weighbridges



Load Cells



Scales



Crane Scales



Indicators



Packaging Equipment



Onboard Weighing



Batching Consoles



Test Weight



Maintenance



## ■ WHO IS “AUSTRALIAN WEIGHING EQUIPMENT GROUP”

Jeff & Trevor Baillie started Australian Weighing Equipment (or AWE) in 1981, focusing on weighing solutions based on engineering principles. Over 40 years, AWE has built its reputation as a leading supplier of robust weighing, packaging & bulk handling equipment. Our innovative engineering and continuous product developments have led to designs that will stand up to the rigours and demands of your applications.

AWE has increased its investment in manufacturing facilities with a new 3,200sq/m factory in Sydney featuring:

- A CNC Machine Shop
- Heavy Metal Fabrication Shop
- Larger work areas for our team of qualified tradesman

Acquisitions of Bradwood Packaging and Dendy Packaging and Design Engineering has increased our packaging and engineering experience.

In 2008, AWE established a manufacturing facility in China - AWE Group Packaging and Bulk Materials Handling Equipment, a purpose-built 5,000sq/m factory in Suzhou China (70kms From Shanghai).

All of the products we offer are Australian designed and manufactured under our strict quality control system in our own factories both locally and internationally.

## ■ AUSTRALIAN WEIGHING EQUIPMENT OFFICE LOCATIONS



Australian Weighing  
Equipment - Sydney Office

8 Heald Road  
Ingleburn, NSW 2565



Australian Weighing  
Equipment - Brisbane Office

7 Darnick Street  
Underwood, QLD 4119



Australian Weighing  
Equipment - Melbourne Office

37 Barrie Road  
Tullamarine, VIC 3043



Australian Weighing  
Equipment - Melbourne Office

27 Rhur Street  
Dandenong South, VIC 3175

## ■ AUSTRALIAN WEIGHING EQUIPMENT ON SOCIAL MEDIA



@AustralianWeighingEquipment



[www.awe.com.au](http://www.awe.com.au)



/company/awegrouppaustralia



[www.youtube.com/AustWeighing](http://www.youtube.com/AustWeighing)



@australianweighingequipment

Dealer's Information:

SCAN HERE



[www.awe.com.au](http://www.awe.com.au)